

# Platinum QuickStart Card

**LOWRANCE**

## FOR LOWRANCE MODELS

For a complete and full description of how to display Navionics Platinum Chart features in a variety of ways, please refer to your Lowrance User's Manual.

### Getting Started

#### Software version 2.3.0 or higher is required

All 2007 Lowrance 5-inch, and larger, color display units require a free software upgrade to operate the features of Navionics Platinum Charts.

Go to [www.lowrance.com](http://www.lowrance.com), select Downloads, then Product Software Updates, select your unit from the list to download the software update. Follow installation instructions.


**CAUTION:** DO NOT save data or software updates to your Navionics Chart card!  
**CAUTION:** DO NOT install the software update with your Navionics Chart in the unit.

#### Compatible units include:

LCX-113c HD/112c/38c HD/37c/28c HD/27c • LMS-527c DF iGPS/525c DF/522c ICEMACHINE/522c iGPS/ 520c • GlobalMap®9300c HD/9200c/8300c/8200c/7300c HD/7200c/5300c iGPS/5200c/Baja840c/Baja540c

### Panoramic Photos

#### To display a panoramic photo:

- Place cursor cross-hair on top of a “green camera” symbol. 
- A “pop up” box will appear with information about the selected location.
- Press **WPT** (waypoint) and the panoramic photo will appear.

**NOTE:** To view camera symbols, the map screen will need to be zoomed in to at least the 1 nautical mile mark. The angle of the camera symbol indicates the direction in which the photo was taken.

Photo/Marina Icons Appear At Lower Zooms



Panoramic Photo



# Platinum QuickStart Card

**LOWRANCE™**

FOR LOWRANCE MODELS

## 3D View

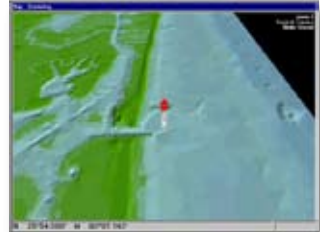
To display 3D view:

- Press **MENU**
- Select **ENABLE 3D**
- Press **EXIT**
- Use **DIRECTION PAD** to change viewing angle
- Select **ENABLE 3D** (undo “check mark”) to return to the main map screen

**NOTE:** 3D cartography can be viewed in full screen, split screen, vertical exaggeration and in a variety of views. Refer to your User’s Manual for more information.

**NOTE:** For best performance, select Aerial Overlay from the **3D OPTIONS** selection screen and set the option to either “LAND ONLY”, “SEA ONLY” or both “LAND & SEA”.

3D Chart Display



3D Display with Land & Sea Photo Overlay



## Top-down Photos

To display Aerial or Satellite Photos:

- Access is available on the **MAP** Page
- Press **MENU**
- Select **MAP CATEGORIES DRAWN**
- Select **NAVIONICS**
- Select **AERIAL PHOTOGRAPHY** (Default setting is “un-checked”, or off)
- Press **ENTER** repeatedly to change the transparency of the Aerial Photography between 0%, 25%, 50%, 75% and 100%
- Press **EXIT** 2 times to return to main mapping screen

**NOTE:** HotMaps Platinum Top-down Photos are available only at 2, 1, 1/2, and 1/4 nm Zoom levels.

**NOTE:** If Top-down Photos do not function correctly, a re-start of the unit corrects the problem.

Map Categories Drawn, Navionics



Photo Overlay on Land & Sea, at 100%

