


# Platinum QuickStart Card

**NORTHSTAR<sup>®</sup>**

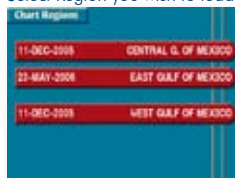
For a full description of how to display Navionics Platinum Chart features in a variety of ways, please refer to the Northstar 6100i Reference Manual. Software version 6.0 or higher required to access all of these features.

## Getting Started

After inserting a chart card  it will go to the chart region selection screen:


- If inserting a new chart card for the first time you will notice an hourglass icon appears indicating the chart is being optimized for speed enhancements.
- Select the chart region you wish to load at this time.
- If this is the first time  the region is selected a 3 minute one time speed optimization will occur.
- To select a different region will require you to press the **CHART** key 2 to 3 times depending on the screen you are viewing at the present time.

Select Region you wish to load




## Panoramic Photos

To display a panoramic photo:

- Press the **CHART** key to display the chart screen.
- Zoom in close on a section of the chart where you see a camera icon. 
- Put the cursor on the appropriate camera icon.
- Photo information, Distance & Bearing are shown at the bottom of the screen.
- Press the **MORE INFO** key to display the panoramic photo.
- Press the **RETURN** key when you want to go back to the main chart screen.

or, as a second option for viewing more panoramic photos:

- Put the cursor on the appropriate port symbol , press the **MORE INFO** softkey.
- Press the **PHOTOS** softkey for more panoramic photos, if available.

A third option for panoramic photos is also available through port information accessed from the waypoints and routes key menu.

Photo/Marina icons appear at lower zooms



Panoramic Photo



# Platinum QuickStart Card

FOR NORTHSTAR 6100i

NORTHSTAR

## 3D Chart

Using the 3D presentation, you can view the shape of the ocean floor and land areas as a three-dimensional image.

### To display a 3D Chart:

- Press **CHART** key until you get the 3D screen (up to two presses).
- Press the **CONTROL** softkey to set to Camera mode. (If not already in camera control mode.)
- Using the cursor pad will allow you to view various areas and angles of interest as if looking from an inverted bowl placed over your vessel. You can also use the **IN** and **OUT** softkeys to maneuver the view.

3D Chart Display

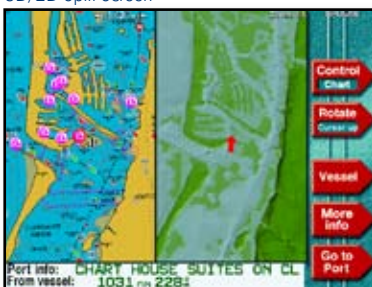


## 3D/2D Split Screen

### To display 3D/2D split screen view:

- Press **SPLIT** key for a split screen view.
- From the split screen, press **SPLIT** a second time to change the content of the split screen view. If further options are enabled pressing **SPLIT** again enables these views.

3D/2D Split Screen



## 3D and Aerial Photos

### To display 3D and Aerial Photos:

- Press the **CHART** key to return to the last viewed chart view. If it is the 2D chart view, press **CHART** again to see the 3D chart view.
- Use the **OVERLAY** softkey to see 3D bathymetric data by itself, or to put an aerial photo on top of the 3D image.
- Pressing **OVERLAY** softkey toggles between *Off* and *Photos* - the photo being a satellite-style view.

3D/Aerial Photo Overlay

