

Platinum QuickStart Card

FOR RAYMARINE E-SERIES





For a full description of how to display Navionics Platinum Chart features in a variety of ways, please refer to the Raymarine E-Series Reference Manual.

Panoramic Photos

Available for many ports and marinas.

To display a panoramic photo (3nm range), either:

- Press **ACTIVE** to highlight chart window.
- Put the cursor on the appropriate camera icon  and Press **OK**, Press **VIEW PHOTO**. Or,
- Put the cursor on the appropriate port symbol , Press **OK**, then Select the **PHOTOS** option, Select photo number, Press **VIEW PHOTO**. This page also provides more information such as Pilot Books, Port Services and more.



Aerial Photo Overlay

Available for navigable waters approximately 3 miles inland along the coastline.

(NOTE: Photo resolution and availability may vary depending on the region)

To display aerial photo overlay (6mi range or less):

- Select **PRESENTATION, CHART LAYERS** (A Series select **CHART LAYERS & DATA**), **AERIAL OVERLAY, ON**, Turn rotary knob (A Series use cursor pad) to adjust photo layer opacity.

70% Opacity level



40% Opacity level



20% Opacity level



Specifying the overlay area:

- Photo overlay can be displayed for land areas only, or for land and sea areas. Press **MENU** (A Series press and hold **PAGE/MENU**), Select **CARTOGRAPHY SETUP**, Select **AERIAL PHOTO OVERLAY**.

Land and sea overlay

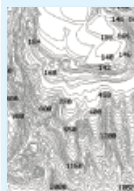


Land only overlay



HD Fishing Charts

- To display high-definition fishing charts, Press **PRESENTATION**, Press **CHART LAYERS**, under **CHART TYPE**, Press button to toggle between **FISH** and **NAV**.





Platinum QuickStart Card

FOR RAYMARINE E-SERIES



3D View

Depth information can be shown in three dimensions.

Split-screen CHART|3D VIEW (6nm or less):

- Press **PAGE** (A Series press **PAGE/MENU**) and appropriate soft key at bottom of display for Chart/3D View as shown on right.
- Select **PRESENTATION, CHART MODE** and **ORIENTATION, CHART SYNC**, select **3D**.
- Press **ACTIVE** to highlight 3D window, Press **MENU** (A Series press and hold **PAGE/MENU**), **3D CHART SETUP**, Select desired viewing preferences.
- With 3D window active, adjust viewing preference with rotary knob (A Series use cursor pad) and soft keys at bottom of display.
- To adjust 3D exaggeration in 3D window, Select **PRESENTATION, 3D VIEW OPTIONS, ADJUST EXAGGERATION**, turn rotary knob (A Series use cursor pad) to adjust.

Setup desired page view



Split-screen: 3D w/overlay & Chart view w/overlay



Simulator

How to set simulator to a particular position.

- Press **ACTIVE** to highlight chart window, place cursor in desired water viewing area.
- Press **MENU** (A Series press and hold **PAGE/MENU**), Select **SYSTEM SETUP, SIMULATOR ON**.

Cartridge Removal!

- Press **MENU** (A Series press and hold **PAGE/MENU**), Select 'Remove CF Card', Click 'Right>' on cursor pad, remove card when 'OK' dialog appears.

Exaggeration factor x1



Exaggeration factor x50

